

An aerial photograph of a large lake with a forested shoreline on the left. A large white houseboat with a blue roof is moored near the shore, with a smaller pontoon boat nearby. The water is a mix of blue and brownish-yellow. The background shows a distant shoreline with more trees.

# Lake Vermilion Houseboats

[vermilionhouseboats.com](http://vermilionhouseboats.com)

9482 Angus Road | Tower, Minnesota 55790 | 218-753-3548



# Welcome

Welcome to Lake Vermilion Houseboats, the only Houseboat rental fleet on Minnesota's legendary Lake Vermilion. Lake Vermilion is the 5th largest lake within the state of Minnesota and is the state's largest Canadian Shield lake. Canadian Shield lakes offer beauty and solitude unmatched by any other lake. Lake Vermilion has become one of the most popular lakes in Minnesota because of its unparalleled natural splendor, size, seclusion, location, and fishing. The lake is known for its world class walleye, state record muskie, and plentiful smallmouth bass fishing.

Location is a huge appeal for guests that visit Lake Vermilion! Located only 3.25 hours north of the Twin Cities it is an easy trip for a weekend getaway or longer stays. The *National Geographic Society* declared Lake Vermilion one of the top ten most scenic lakes in the United States. Lake Vermilion borders the Superior National Forest and the Boundary Waters Canoe Area Wilderness (BWCAW). Serving as one of the best fishing lakes of the entire state, no wonder it stands to claim the title, Best Lake in Minnesota!

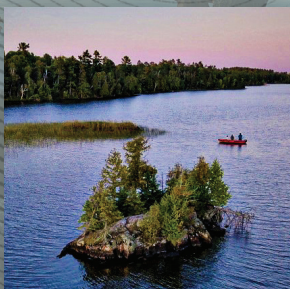
Kyle and Joy Colbert purchased Lake Vermilion Houseboats in May of 2017 and are the fourth owners in the history of the Houseboat fleet. We have three children: daughter Chance, sons Croy and Canon. Having vacationed as a family in the upper Midwest and Ontario we feel we have a keen sense on what guests are looking for in a vacation. Since our ownership in 2017 we have made countless upgrades to our fleet and landing. We have made personal sacrifices to invest within the business to get our landing and fleet to the level we are proud of and expect for our respected guests.

With superior customer service being our top priority, we feel our guests will find comfort in knowing their needs are met. Let us help you in making the most memorable vacation in the Northwoods of Minnesota.

*Welcome aboard;  
we look forward to serving you!*



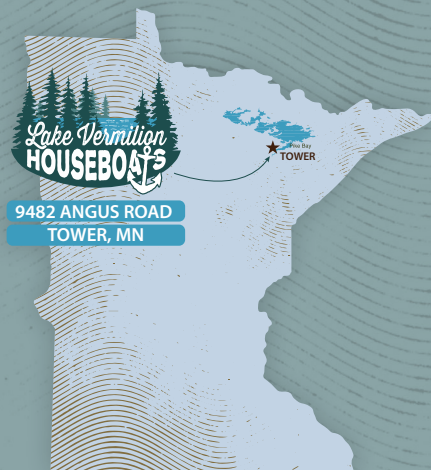




# FREQUENTLY ASKED QUESTIONS

CHICAGO	8.5 HOURS
MPLS./ST. PAUL	3.5 HOURS
FARGO	5 HOURS
DES MOINES	7 HOURS

## TRAVEL TIME FROM



### WHAT ARE YOUR RENTAL PACKAGES?

- Weekend package runs Friday to Monday
- Midweek package runs Monday to Friday
- Weekly package runs Monday to Monday or Friday to Friday

\*Our check in time is 3pm the day of your reservation and check out is at 9am the day of departure. Early check-ins are charged a 1/2 day rental fee as well as late check-outs\*

### DO YOU HAVE A HOSPITALITY BOAT?

ABSOLUTELY! Running short on supplies? Forgot the marshmallows? No worries! Our crew is more than happy to visit you with our hospitality boat to deliver requested supplies or pick up extra garbage during those long stays.

### WHERE DO WE DOCK AT NIGHT?

You will dock your Houseboat at designated mooring sites along Lake Vermilion's shorelines each night.

### ARE PETS ALLOWED?

Allowed on all Houseboats.  
\$50/DAY/PET  
\$250 /WEEK/PET

### DO YOU HAVE A DAMAGE PROTECTION PLAN?

Our optional damage protection plan can be purchased for \$35 per night on single outboard Houseboats, \$50 per night for twin outboard Houseboats. You are responsible for all damages if you choose not to purchase the damage protection plan.

### ARE FISHING BOATS INCLUDED?

No, but they are required for safety reasons. You can either bring your own boat or rent one from us.

### HOW MUCH DOES FUEL COST?

Only pay for what you use! Average fuel consumption for the majority of the Houseboats is 10-15 gallons or less a day

### WHAT IS YOUR CANCELLATION POLICY?

If you need to reschedule your vacation, we can transfer your deposit within the same season or roll it over to the following season. If rolling over to the following season, an additional deposit is required when your dates are confirmed! We will attempt to work with you to reschedule your vacation, within reason, during the same calendar season; however, we cannot guarantee the ability to reschedule. If you do not reschedule, your deposit and all payments made will be forfeited.

All deposits are non-refundable.

### STANDARD HOUSEBOAT EQUIPMENT

- REFRIGERATOR/FREEZER
- STOVE/OVEN
- CHARCOAL GRILL
- COOKING/EATING/GRILLING UTENSILS
- COFFEE MAKER
- KITCHEN DISH SOAP/ DISH SCRUBBER
- KITCHEN TOWELS
- GARBAGE BAGS
- BROOM/VACUUM
- FRESH DRINKING WATER
- TOILET PAPER
- 100 QT COOLER
- DECK CHAIRS
- LIFE JACKETS
- GPS UNIT
- MAP
- TIE UP ROPES
- PILLOWS
- HOT WATER
- GENERATOR
- PROPANE HEAT
- SLIDE

### SUGGESTED SUPPLIES TO BRING

- PAPER TOWELS
- ZIPLOC BAGS/TUPPERWARE
- ALUMINUM FOIL
- SHOWER, BEACH, HAND TOWELS
- FAN
- EXTENSION CORD
- BLUE TOOTH SPEAKER
- SUNSCREEN
- BUG SPRAY
- DECK OF CARDS/GAMES/ BOOKS
- CHILD LIFE JACKET
- FISHING LICENSE
- LANDING NET

Visit **FAQ PAGE @**  
**vermilionhouseboats.com**  
to get all your questions answered!



**30% OFF**  
May 13 – May 29

**10% OFF**  
May 30 – June 16

**25% OFF**  
Sept. 5 – Sept. 29  
End of Season

## 40' Explorer\*\*

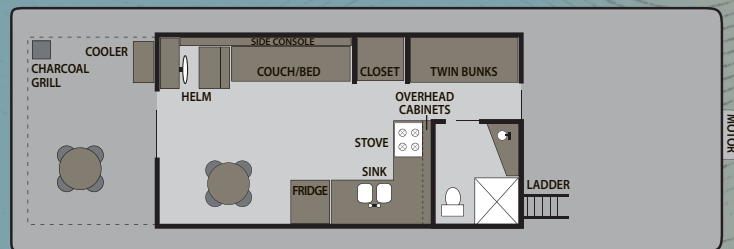
Recommended Capacity: 1-2  
Max Capacity: 4

Weekly: \$1910

Weekend: \$1200 (F-M)

Midweek: \$1600 (M-F)

non-refundable Deposit: \$500



## 44' Explorer\*\*

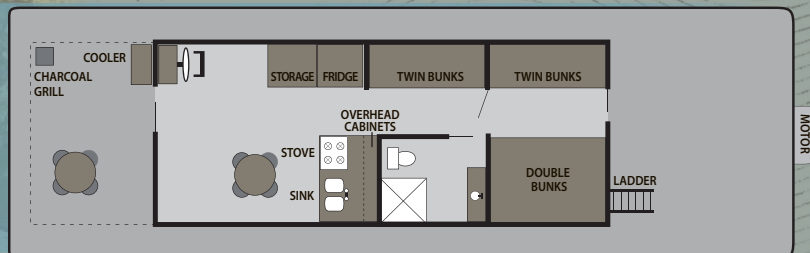
Recommended Capacity: 2-4  
Max Capacity: 6

Weekly: \$2565

Weekend: \$1605 (F-M)

Midweek: \$2140 (M-F)

non-refundable Deposit: \$500



## 44' Royalist\*\*

Recommended Capacity: 4-6  
Max Capacity: 8

With Screen Weekly: \$3150

Weekend: \$2025 (F-M)

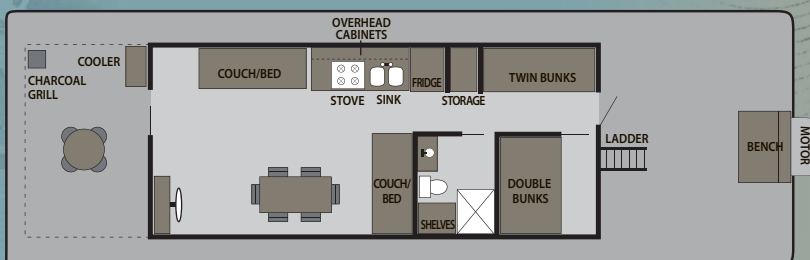
Midweek: \$2700 (M-F)

Without Screen Weekly: \$2910

Weekend: \$1830 (F-M)

Midweek: \$2440 (M-F)

non-refundable Deposit: \$500



## 50' Deluxe Royalist\*\*

Two available floor plans to meet your needs.  
Just mention Houseboat preference when booking.

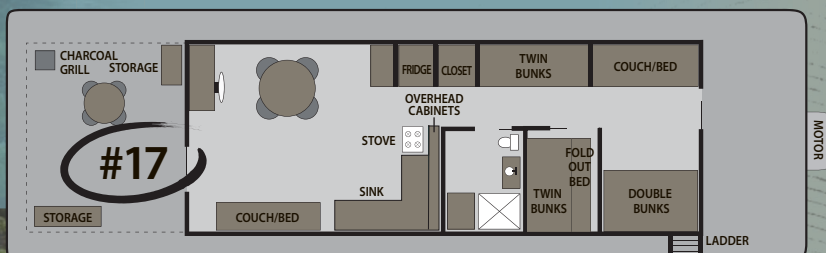
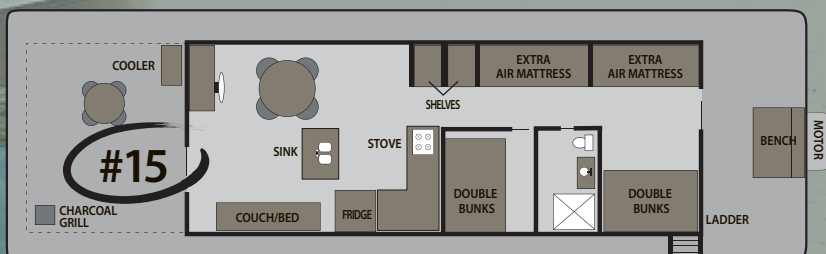
Recommended Capacity: 4-6  
Max Capacity: 9

Weekly: \$3560

Weekend: \$2235 (F-M)

Midweek: \$2980 (M-F)

non-refundable Deposit: \$1000



## 54' Maki #16\*\* 54' Maki #18\*\*

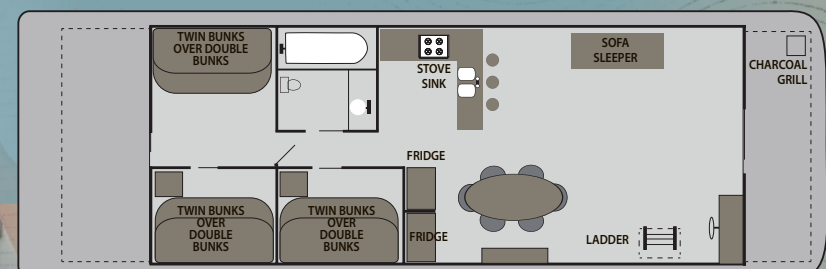
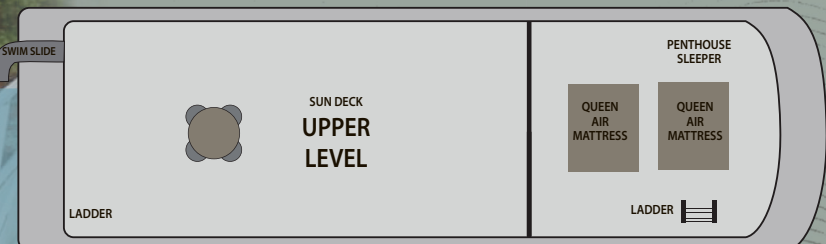
Recommended Capacity: 6-8  
Max Capacity: 10

Weekly: \$6450

Weekend: \$3825 (F-M)

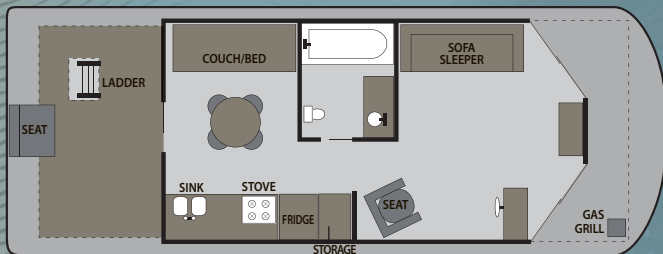
Midweek: \$5100 (M-F)

non-refundable Deposit: \$1500



\*\* Optional hot tub





## 42' Cruiser \*

Recommended Capacity: 2-3  
Max Capacity: 4

Weekly: \$3125

Weekend: \$1920 (F-M)

Midweek: \$2560 (M-F)

*non-refundable* Deposit: \$500



## 55' Cruiser \*

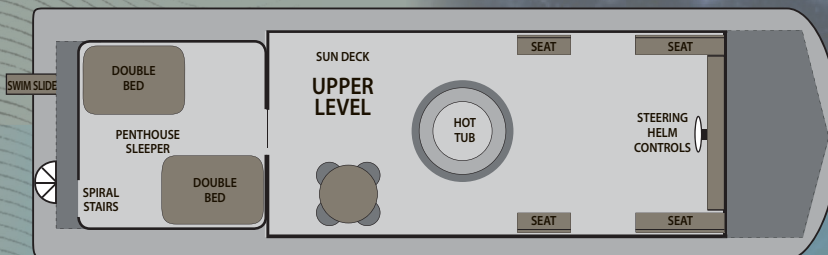
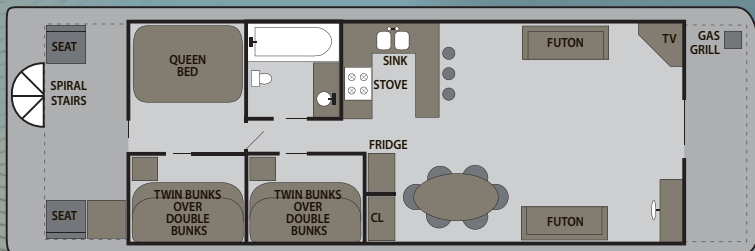
Recommended Capacity: 6-8  
Max Capacity: 10

Weekly: \$6040

Weekend: \$3705 (F-M)

Midweek: \$4940 (M-F)

*non-refundable* Deposit: \$1500



## 60' Cruiser \*

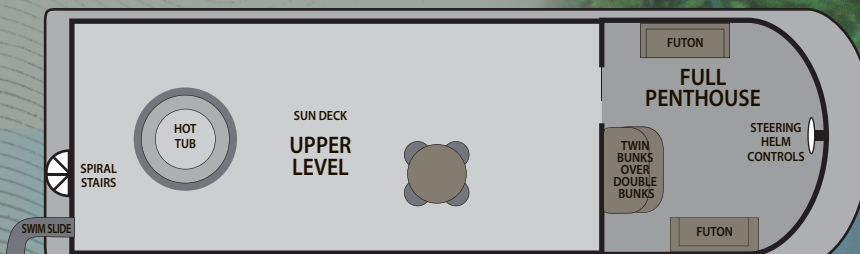
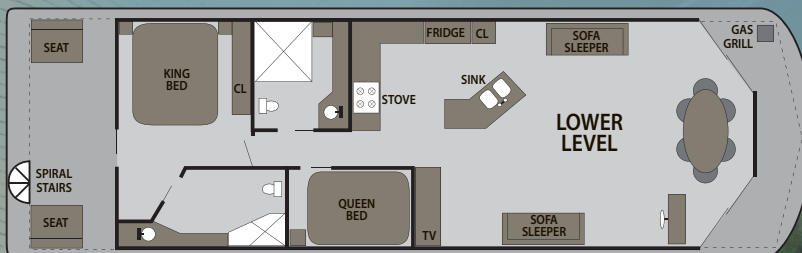
Recommended Capacity: 6-8  
Max Capacity: 10

Weekly: \$6790

Weekend: \$4155 (F-M)

Midweek: \$5540 (M-F)

*non-refundable* Deposit: \$1500



## 65' Executive \*

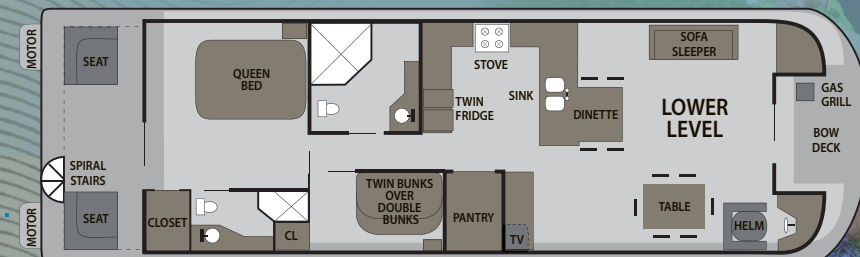
Recommend Capacity: 6-8  
Max Capacity: 12

Weekly: \$7005

Weekend: \$4470 (F-M)

Midweek: \$5960 (M-F)

*non-refundable* Deposit: \$1500



\* Equipped with hot tub, microwave, TV





# SNOWMOBILE RENTAL



## 2022 POLARIS 550 INDY ADVENTURE 144

For riders who want snow maneuverability and on-trail confidence – easy electric start and reverse and great response of the fan-cooled 550 engine delivers reliable performance. This sled includes:

- Two-passenger
- Electric start & reverse
- Excellent fuel economy and torque
- Driver & Passenger electric shield power outlet
- Driver & Passenger heated hand grips
- Windshield and utility cargo rack (storage bag included)



Snowmobile enthusiasts look no further if you're needing quick easy access to Minnesota's best-groomed trail system! We are located directly lake shore on Highway 77. Get instant gratification as you jump on either the Vermilion Lake trails, Arrowhead trail, Iron Ore trail or the Taconite trail. Thousands of miles of mother nature's beauty at its best, you'll fall in love with winter all over again.

## DAILY

\$300 + tax (9am – 5pm)

23 Hour - \$375 + tax (9am – 8am following day)

\* REQUIRED ON SATURDAYS RENTALS

2 Day Package - \$550 + tax (9am – 5pm following day)

3 Day Package - \$750 + tax (9am - 5pm on 3rd day)

4 Day Package - \$900 + tax (9am – 5pm on 4th day)

5 Day Package - \$1000 + tax (9am - 5pm on 5th day)

6 Day Package - \$1050 + tax (9am – 5pm on 6th day)

7 Day Package - \$1100 + tax (9am - 5pm on 7th day)

Guided Trip - \$425/sled (2 sled minimum with 48-hour advanced notice)

Special Rate: 25% off rentals Monday - Thursday (excluding dates of Dec. 23 - Jan. 2 and holidays)

\* DELIVERY & PICK UP AVAILABLE. MUST BE A MINIMUM 23HR RENTAL RATE OF \$1 PER MILE WITH A \$60 MINIMUM

\* All rentals include gas + oil, no need to bring unit back topped off

\* Rental units returned late incur a \$100 charge per hour. We enforce this fee out of courtesy to our next rental customer

Call  
**218.753.3548**  
to Reserve Today  
OR BOOK Online!

## SNOWMOBILE RENTAL POLICY

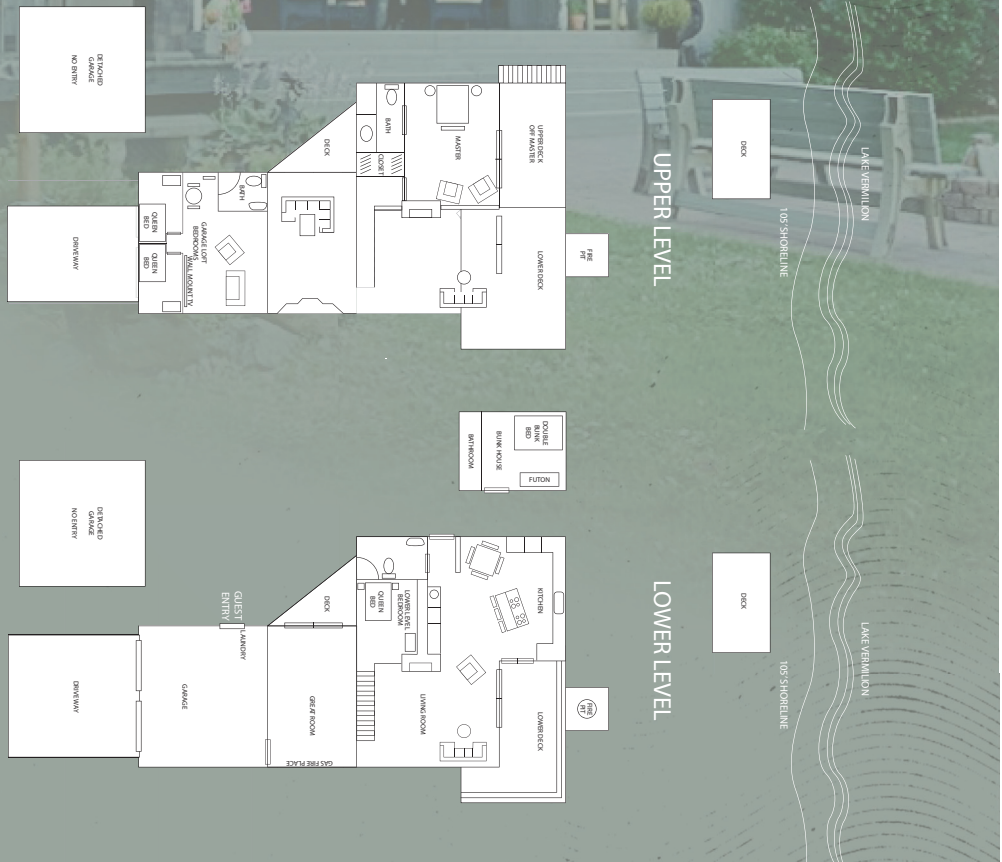
To rent a snowmobile you must be 18 years of age and present a valid driver's license. DOT certified helmets are mandatory. A deposit of 50% of your total reservation is required at the time of the reservation. If you cancel more than 15 days before the date of rental, your deposit will be refunded less a \$50 administrative fee. At less than 15 days, the deposit is forfeited. If conditions are deemed unsafe by our staff at your scheduled time, all deposits will be refunded. The balance is due at the time of rental. A credit card damage hold

of \$5000 per unit is required. (Sorry, no checks accepted for damage hold). If you need to arrive later than 30 minutes after your designated check-in time, you will need to call to make arrangements or forfeit your reservation. If snowmobiles are trailered off-site, the trailer must have ramps or tilt. \*\*NO SNOWMOBILES WILL BE ALLOWED TO BE TRAILED IN THE BED OF A PICK UP TRUCK! NO EXCEPTIONS!\*\* The snowmobile rental policy and prices are subject to change without notice. 7.375% MN Sales Tax added to all rates.



# Welcome to BIRCHWOOD LANE

Your private luxury lake home rental



Birchwood Lane offers privacy, relaxation all in one of the most coveted areas of Lake Vermilion! The 105' of private natural sand shoreline, 4 separate decks, firepit with Charcoal BBQ area and not to mention the level front yard are perfect for lawn games and making memories. The full gourmet kitchen has more than enough items to make a feast for your crew including all service and beverage station needs. Full luxury linens and towels provided. With two separate living rooms, the Great Room features a gas fireplace along with smart TV, the Living Room has views of Big Bay and direct lake access. Private loft above garage that features 2 separate bedrooms with queen beds, lounge/game area with smart TV, and a 3/4 bathroom. New floating dock installed Spring 2021 as well as new flooring in the Bunkhouse. The Bunkhouse is available all year and can accommodate up to 4 adults. The home can sleep 8 adults comfortably.

\* NO PETS \* NOT WHEELCHAIR ACCESSIBLE \* WATER TOY AND BOAT RENTALS AVAILABLE

Call  
218.753.3548  
to Reserve Today  
OR BOOK Online!

**vermilionhouseboats.com**

9482 Angus Road | Tower, Minnesota 55790 | 218-753-3548





# NEW FOR THE 2022 SEASON!

**Luxury Lake Home Rental with 105' of private beach, two new Houseboats, 24' Fish & Ski Tritoon Pontoon with 150HP, and brand-new fleet of fishing boat rentals.**

Each reservation will receive a detailed paper map of Lake Vermilion, over-viewing designated Houseboat mooring locations on the lake. The paper map also has precise contours of the lake for the anglers in the group scouting for the days fishing adventure!

Also, making it easy for our staff to point anglers in the right direction for targeted species during their trip. The paper map along with the Humminbird Helix 5 GPS unit with LakeMaster map chip allows guests to safely and confidently navigate Lake Vermilion!

## OUR FLEET THREE NIGHT MINIMUM

Houseboat	WEEKEND (Fri-Mon)	MIDWEEK (Mon-Fri)	WEEKLY	DEPOSIT Non-Refundable (Transferable)	Recommended Capacity	Max Capacity
40' EXPLORER	\$ 1,200	\$ 1,600	\$ 1,910	\$ 500	1-2	4
44' EXPLORER	\$ 1,605	\$ 2,140	\$ 2,565	\$ 500	2-4	6
44' ROYALIST	\$ 1,830	\$ 2,440	\$ 2,910	\$ 500	4-6	8
44' ROYALIST (Screen)	\$ 2,025	\$ 2,700	\$ 3,150	\$ 500	4-6	8
50' DELUXE ROYALIST	\$ 2,235	\$ 2,980	\$ 3,560	\$ 1,000	4-6	9
54' MAKI	\$ 3,825	\$ 5,100	\$ 6,450	\$ 1,500	6-8	10
42' CRUISER	\$ 1,920	\$ 2,560	\$ 3,125	\$ 500	2	4
55' CRUISER *	\$ 3,705	\$ 4,940	\$ 6,040	\$ 1,500	6-8	10
60' CRUISER *	\$ 4,155	\$ 5,540	\$ 6,790	\$ 1,500	6-8	10
EXECUTIVE *	\$ 4,470	\$ 5,960	\$ 7,005	\$ 1,500	6-8	12

\* Payment-in-full due 60 days prior to arrival. All rentals are subject to state and local sales tax!

### 2021 24' Grand Island Pontoon

150HP 4-Stroke Outboard  
GPS/High Definition Map  
Chip Captain's Chair, 4  
pedestal seats, 3 bench seats  
10 Passengers Max Bimini  
Top, Rear Swim Ladder, Ski/  
Tube Tow Bar, Livewell,  
Baitwell, Rod & Tackle  
Storage  
\$375 + Tax per day  
\$1,875 + Tax per week  
\* 3 day minimum rental\*

### 15' FISHING BOAT

15 HP Outboard  
\$100 per night  
\$500 per week

### 16' ALASKAN LUND

60 HP tiller,  
Trolling Motor,  
Electronics, Live Well  
\$175 per night  
\$875 per week

### HOT TUB

Come standard on all  
Cruiser and Executive Series  
Houseboats and are optional  
on all other Houseboats:  
\$150 per night  
\$750 per week

SEE OUR  
**WEBSITE**  
FOR PRICING  
and FREQUENTLY  
ASKED QUESTIONS

### PETS FEE

\$50/DAY/PET  
\$250/WEEK/PET  
Pets allowed on all  
Houseboats

### FOR RENT

- Paddle Board
- Kayak
- Canoe
- Tube
- Water Ski

### CANCELLATIONS:

If you need to reschedule your vacation we can transfer your deposit within the same season or roll it over to the following season. If rolling over to the following season an additional deposit is required when your dates are confirmed!

**DEPOSITS ARE NONREFUNDABLE!!**